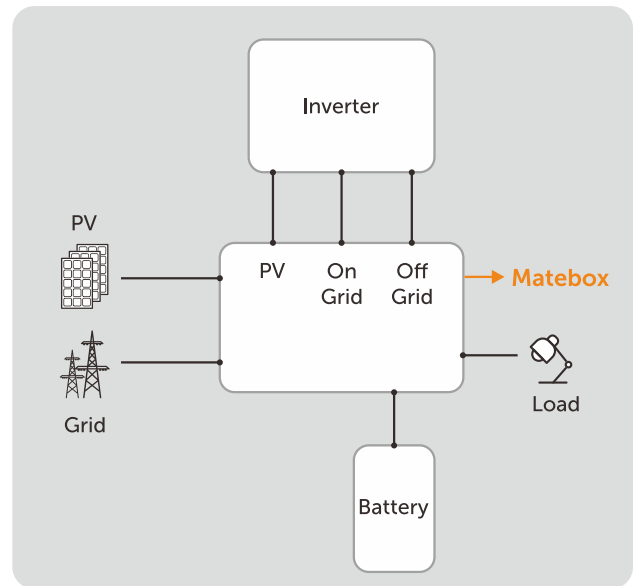
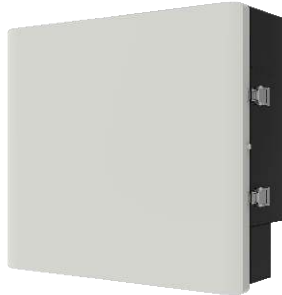


Matebox

For the new X-ESS G4, we get rid of the complicated wiring work by laying all the wires in the Matebox. All you need to do is just to install one module on the top of another, and connect all the cables which are already well-sorted in different ports in different ports.



X1-Matebox

PV	
Max. input voltage [Vdc]	600
Max. short circuit current [A]	16/16
No. of MPP trackers	2
BATTERY	
Battery voltage range [V]	80-480
Max.charge/discharge current [A]	30
ON-GRID	
Rated voltage [Vac], frequency [Hz]	220/230/240, 50/60
Max. apparent on-grid input/output power [VA]	7500
Max. on-grid current [A]	32.6
OFF-GRID	
Rated voltage [Vac], frequency [Hz]	230, 50/60
Rated power [VA]	7500
Rated current [A]	32.6
GRID	
Rated grid voltage [Vac], frequency [Hz]	220/230/240, 50/60
Max. input current [A]	60
LOAD	
Rated voltage [Vac], frequency [Hz]	220/230/240, 50/60
Max. current [A]	60
ENVIRONMENT LIMIT	
IP class	IP65
Protection class	Class I
Operating temperature range [°C]	-35..... +60°C (derating at +45°C)
Storage temperature [°C]	-40..... +70°C
Humidity [%]	0~100 (condensing)
Altitude[m]	<3000
Over voltage category	III(AC), II(DC)
OTHER	
Cooling concept	Natural
DIMENSION AND WEIGHT	
Dimensions [mm]	482*437*185
Net weight [kg]	10